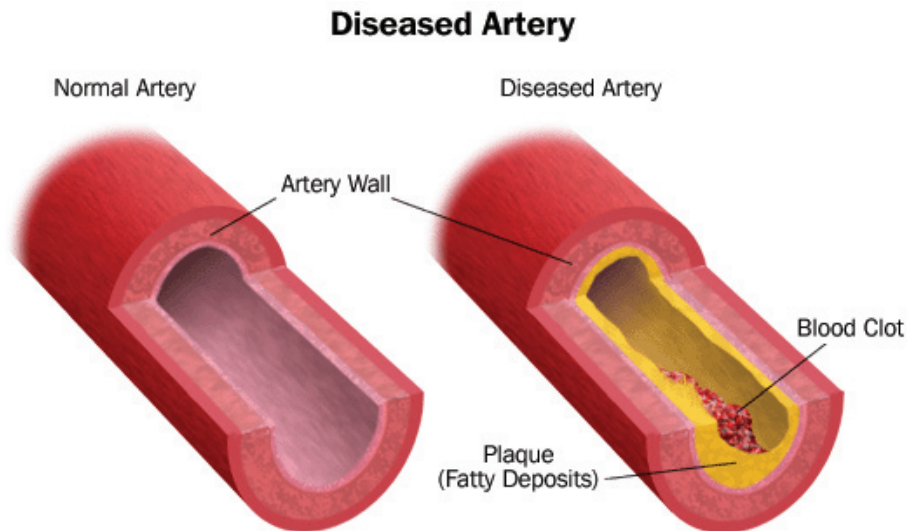


Peripheral Vascular Disease

Peripheral vascular disease is the buildup of plaque in the blood vessels in your legs. Plaque is a fatty build-up that makes your blood vessels smaller. This buildup of plaque reduces the flow of blood and increases the chance of blood clots.



Reprinted with permission from www.southbaycardio.com.

Coumadin®/warfarin:

- Helps blood flow easier through smaller blood vessels.
- Decreases clot formation.